

Mezzanine Inspection Report

REVISION 1

Date: 11/21/2014	Station Name: E02 Shaw-Howard U South	Mezzanine #: 071	Completed By: Dion Small
------------------	---------------------------------------	------------------	--------------------------

Summary

Video scoping was successfully completed for the upper and lower communication and power ducts in the faregate arrays. Pull string was successfully installed for the upper and lower communication ducts in the faregate arrays. Video scoping and pull string installation was completed for all duct runs from the Kiosk to handhole 4. Video scoping between handhole 4 and pull box 1 could not be completed due to a 90 degree vertical sweep. Pull string installation was completed in the conduit run from pull box 1 to AFC Panel.

Scanning is not required at this mezzanine.

Scoping of Faregate Array(s)

Task	3	Yes/No	Notes
Communications Duct – Upper Faregate Array (2-Gates)			
Was video scoping completed for the entire duct run?		Yes	Refer to WMATA Shaw- Howard South 6inch Upper Comm Duct.avi file.
Were pull strings installed at all faregates in the array?		Yes	
Were there any obstructions or blockages? Provide details of type and specific location.		No	
Is the duct at capacity? Provide additional details about the dimensions of ducts and number of wires.	3	No	6" duct – less than 10 wires
Communications Duct - Lower Faregate Array (2 Gates)			
Was video scoping completed for the entire duct run?		Yes	Refer to WMATA Shaw- Howard South 6inch Lower Comm Duct.avi file.
Were pull strings installed at all faregates in the array?		Yes	
Were there any obstructions or blockages? Provide details of type and specific location.		No	
Is the duct at capacity? Provide additional details about the dimensions of ducts and number of wires.	3	No	6" duct – less than 10 wires
Power Duct - Upper Faregate Array (2 Gates))			
Was video scoping completed for the entire duct run?		Yes	Refer to WMATA Shaw- Howard South 6inch Upper Power Duct.avi file.
Were there any obstructions or blockages? Provide details of type and specific location.		No	
Is the duct at capacity? Provide additional details about the dimensions of ducts and number of wires.	3	No	6" duct – less than 10 wires
Power Duct - Lower Faregate Array (2 Gates)			
Was video scoping completed for the entire duct run?		Yes	Refer to WMATA Shaw- Howard South 6inch Lower Power Duct.avi file.
Were there any obstructions or blockages? Provide details of type and specific location.		No	
Is the duct at capacity? Provide additional details about the dimensions of ducts and number of wires.		No	6" duct – less than 10 wires

Scoping of Power Duct - Kiosk to AFC Panel		
Task	Yes/No	Notes
Kiosk to Handhole 1 (25' run)		
Was video scoping completed for the entire duct / conduit run?	Yes	Refer to WMATA Shaw- Howard South Power Feed Kiosk to H.H.1 Duct.avi file.
Was pull string installed?	Yes	
Were there any obstructions or blockages? Provide details of type and specific location.	No	
Is the duct / conduit at capacity? Provide additional details about the dimensions of duct / conduit and number of wires.	No	6" duct – 16 wires
Handhole 1 to Handhole 2 (20' run)		
Was video scoping completed for the entire duct / conduit run?	Yes	Refer to WMATA Shaw- Howard South Power Feed H.H.1 to H.H.2 Duct.avi file.
Was pull string installed?	Yes	
Were there any obstructions or blockages? Provide details of type and specific location.	No	
Is the duct / conduit at capacity? Provide additional details about the dimensions of duct / conduit and number of wires.	No	6" duct – 16 wires
Handhole 2 to Handhole 3 (10' run)		
Was video scoping completed for the entire duct / conduit run?	No	Short run. Visual inspection completed.
Was pull string installed?	Yes	
Were there any obstructions or blockages? Provide details of type and specific location.	No	
Is the duct / conduit at capacity? Provide additional details about the dimensions of duct / conduit and number of wires.	No	6" duct – 26 wires
Handhole 3 to Handhole 4 (40' run)		
Was video scoping completed for the entire duct / conduit run?	Yes	Full scope completed by scoping both directions due to tangle of wires in duct. Refer to WMATA Shaw- Howard South Power Feed H.H.3 to H.H.4 Duct.avi and WMATA Shaw- Howard South Power Feed H.H.3 to H.H.4 Duct (2).avi files.
Was pull string installed?	Yes	
Were there any obstructions or blockages? Provide details of type and specific location.	No	Tangle of wires between handholes, but no debris
Is the duct / conduit at capacity? Provide additional details about the dimensions of duct / conduit and number of wires.	No	6" duct – 26 wires
Handhole 4 to Pull Box 1 (10' run)		
Was video scoping completed for the entire duct / conduit run?	No	90 degree vertical bend in duct and wire congestion prevented scoping
Was pull string installed?	Yes	
Were there any obstructions or blockages? Provide details of type and specific location.	No	
Is the duct / conduit at capacity? Provide additional details about the dimensions of duct / conduit and number of wires.	No	6" duct – 26 wires

Pull Box 1 to Pull Box 2 (10' run)		
Was video scoping completed for the entire duct / conduit run?	No	Conduit – no scoping required
Was pull string installed?	Yes	
Were there any obstructions or blockages? Provide details of type and specific location.	No	
Is the duct / conduit at capacity? Provide additional details about the dimensions of duct / conduit and number of wires.	No	3" conduit – 5 wires
Pull Box 2 to Pull Box 3 (30' run)		
Was video scoping completed for the entire duct / conduit run?	No	Conduit – no scoping required
Was pull string installed?	Yes	
Were there any obstructions or blockages? Provide details of type and specific location.	No	
Is the duct / conduit at capacity? Provide additional details about the dimensions of duct / conduit and number of wires.	No	3" conduit – 5 wires
Pull Box 3 to AFC Panel (5' run)		
Was video scoping completed for the entire duct / conduit run?	No	Conduit – no scoping required
Was pull string installed?	Yes	
Were there any obstructions or blockages? Provide details of type and specific location.	No	
Is the duct / conduit at capacity? Provide additional details about the dimensions of duct / conduit and number of wires.	No	3" conduit – 5 wires
Observations / Issues / Next Steps		
Sign Off		
	GFP Representative	WMATA PRGM
Name:	Dion Small	
Signature:	<i>Dion Small</i>	
Date:	11/21/2014	

Photo #1 – E02 Shaw-Howard U South: Kiosk to Handhole 1



Photo #2 – E02 Shaw-Howard U South: Handhole 1 to Handhole 2



Photo #3 – E02 Shaw-Howard U South: Handhole 2 to Handhole 3



Photo #4 – E02 Shaw-Howard U South: Handhole 4 from Handhole 3



Photo #5 – E02 Shaw-Howard U South: Pull box 1 to Pull box 2



Conduit run to Pull box 2

Pull box 1

Photo #6 – E02 Shaw-Howard U South: Pull box 2 to Pull box 3

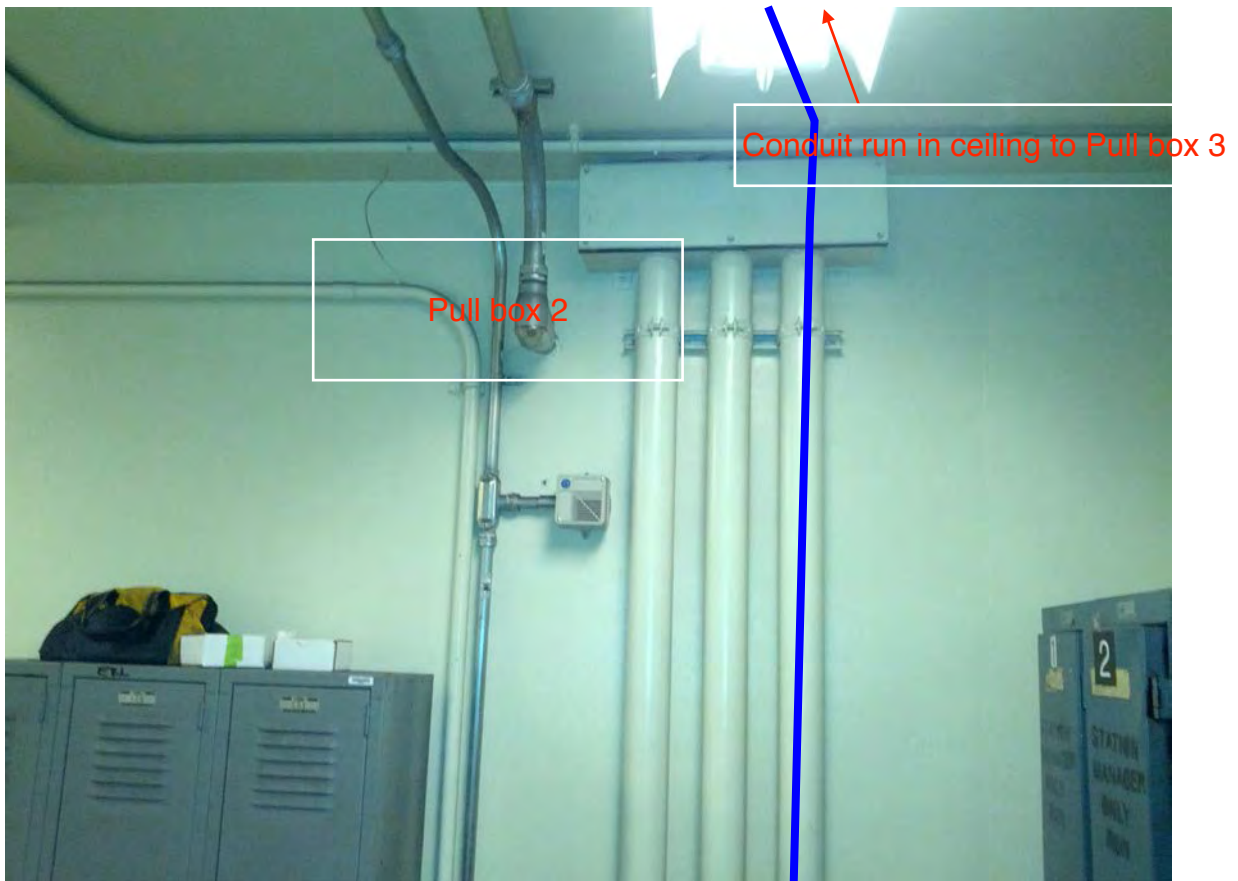


Photo #7 – E02 Shaw-Howard U South: Pull box 3 to AFC Panel

